

The Likely Place RV Resort

By [Tony Hallas](#) - 8/15/2013

About ten years ago Daphne and I were on a dark sky exploration trip to the NE corner of California high on the Modoc Plateau. A lake that looked promising as an astro site turned out to be full of trees with no view of the sky. It was getting late so we decided to head back and pulled up onto a knoll to spend the night. The next morning we looked over the edge of the knoll and there beneath us was a fancy entrance to an RV resort. What's this ... out in the middle of absolutely NOWHERE ... an RV resort ??? What greeted our eyes was a beautiful grassy field for tent campers (empty), spotlessly clean bathrooms with hot showers, very nice camp sites with some shade trees right by the grassy field, a nice restaurant ... and if that wasn't enough ... a challenging, well maintained 18 hole golf course!



Rho Ophiuchus DSLR image from Likely Place

All this under the darkest skies in the US. I say that because I have a Unihedron sky meter, and I have recorded a 21.90 night at Likely Place ... the average is 21.85 for those of you who have these meters. What makes the sky so good at Likely? The location is on the Modoc Plateau which is about 5000 feet in elevation. It is a dry area, with no air pollution to the west, and no light pollution. Likely sits in "total black" on the sky darkness maps, yet is easily accessible via highway 395. The terrain looks a lot like Nevada, which is just over the Warner mountains.

The owners of the RV park had no idea about the celestial resource they lived under. For all of us who have put up with dust and dirt and menial facilities for so long at typical star parties, Likely Place is like a dream come true. Not that it doesn't have a few bummers ... at certain

times of the year there are mosquitoes, and in the late summer you have the possibility of monsoonal storms moving in from Nevada and forest fire smoke which is especially bad this year thanks to the huge fires burning in SW Oregon. But otherwise ... Nirvana.

A few years ago we introduced Vic Marris to Likely Place and the Stellarvue Ultimate Dark Sky Star Party was born. It fills up almost instantly since most of the people come back year after year. When Likely Place is firing, it's horizon to horizon Milky Way painted across an ink black sky. When the sky is clear at night you see the same sky color from the meridian to the horizon.

Recently the owners of the RV resort have, at my suggestion, installed in the telescope field six concrete pads WITH A/C POWER for astro imagers. So now, not only do you have all of the above, but you have a concrete pad with power to run all your gear. They are installing 100% cutoff shielded lights where they might affect the telescope field, otherwise they are happy to turn them off for you. We go to Likely Place every month now for 4-5 nights even though my backyard in Foresthill is quite dark (21.45 Unihedron) it's nothing like Likely Place. And the best comment that can be made about Likely Place is ... even if it's cloudy, the place is still fun.

There are nice side trips you can make into the mountains, lots of interesting things to see and do. If you need supplies, Alturas is just 20 minutes up the road. Indeed if camping or using an RV is not your style, there are some motels in Alturas where you can stay and commute down to Likely Place. It's only 20 minutes away ...

I have been talking to Rick Hedrick about organizing a Planewave Ultimate Dark Sky Star Party at Likely Place ... for those of you who have the more portable versions of the telescopes this would be a great place to "push the limits" of what you can photograph.

Contact information at Likely Place RV Resort is:

Toll Free: (888) 350 -3848

Local: (530) 233-4466

Internet: likelyplace.com (or just Google: Likely Place RV Resort)

On-Site manager for astronomy: Dennis Tate (530) 640-0273

The easiest way to get to Likely Place is to take US 395 north from Reno, Nevada. If you are flying in, some people rent an RV in Reno. Follow the road signs for Alturas, Likely Place is about 20 miles south before you get to Alturas. Turn right at Likely Place, the RV resort is well marked.

Enjoy extremely dark skies during the night, have a nice brunch at the restaurant, and play 18 holes of golf ... my kind of star party!

Clear skies,
Tony Hallas

Here are some photos to help paint the picture...



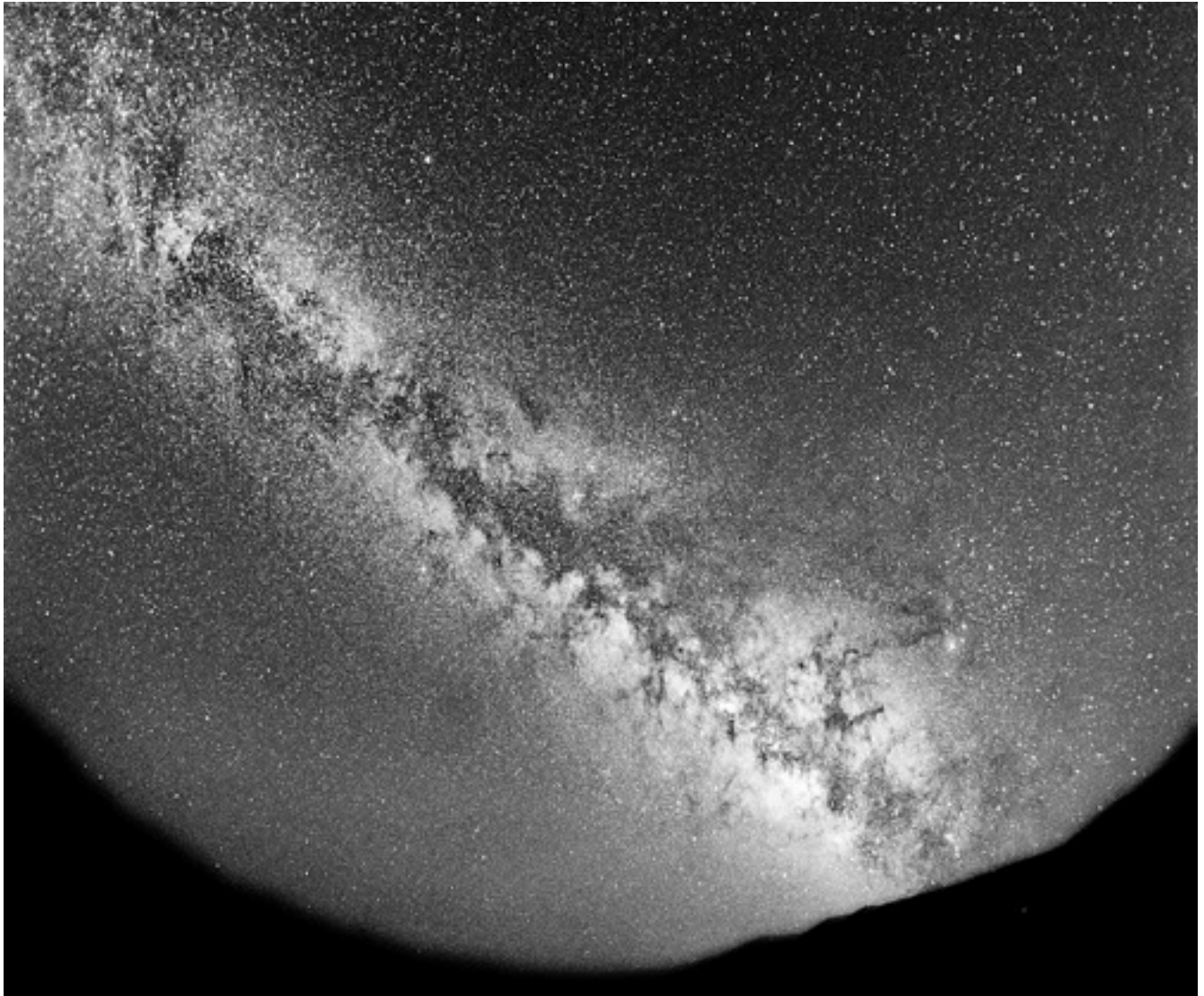
Dave W sets up his refractor on a concrete pad



Forest trail in the Warner Mountains



Grass telescope field



Horizon to horizon Milky Way



Jim B getting ready for a great night



Jon Talbot and the Milky Way at Likely Place



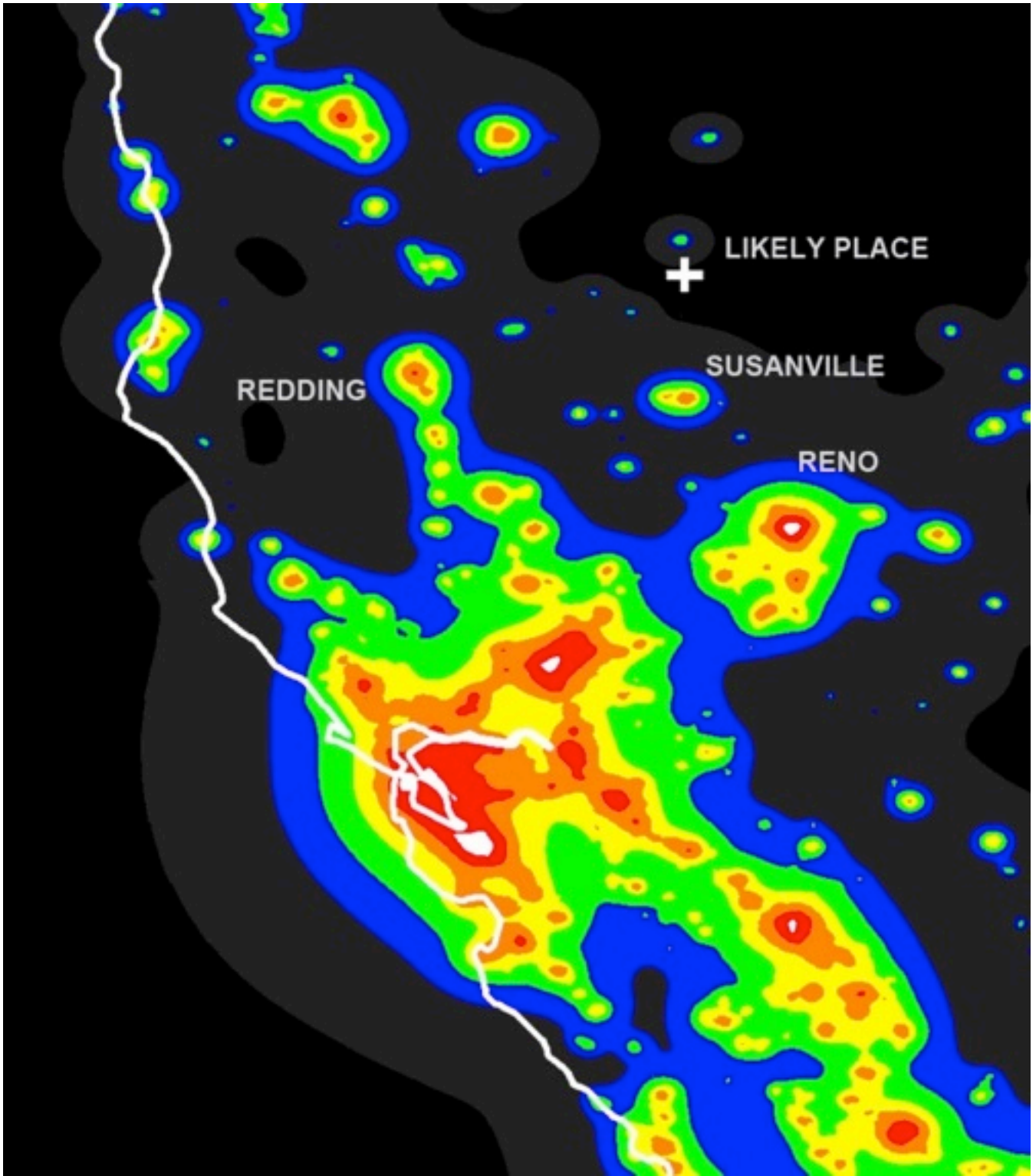
Kathy and Lynn have the best food



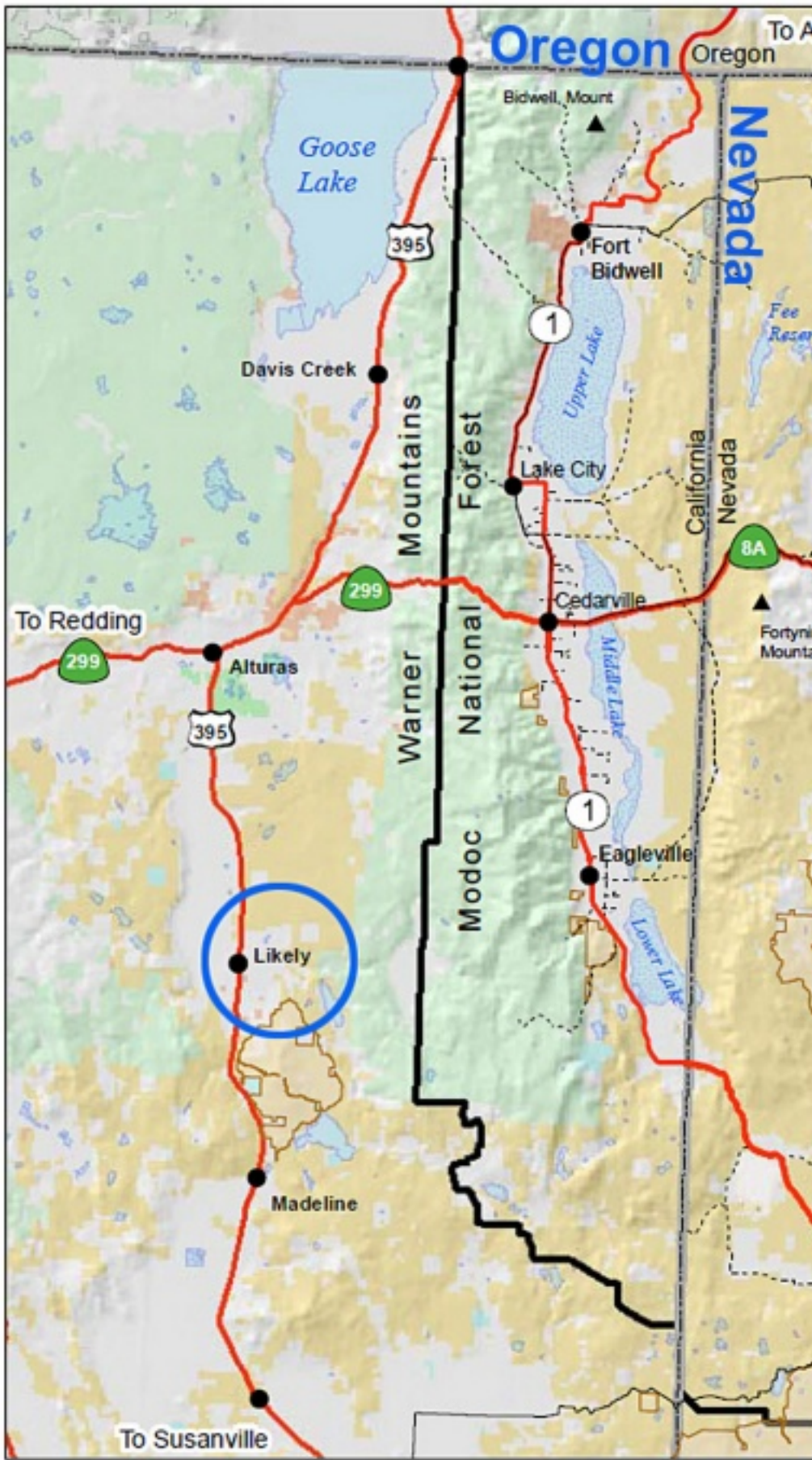
Likely Place Golf Course



Likely Place golf course as well



Likely Place RV Resort Dark Map



Llikely Road Map



Likely RV Resort out in the middle of nowhere



Newly installed concrete pads



Rental cabin at Likely Place RV Resort



Star party participants enjoy golf and the view



State of the art Stellarvue refractor



Stellarvue Star Party at Likely Place



The restaurant at Lively Place RV Resort



Oh, and a beautiful waterfall :-)